



# Replace a seal in four steps

- 1 Take measurements
- 2 Profile selection
- 3 Order
- 4 Installation

## 1 Take measurements

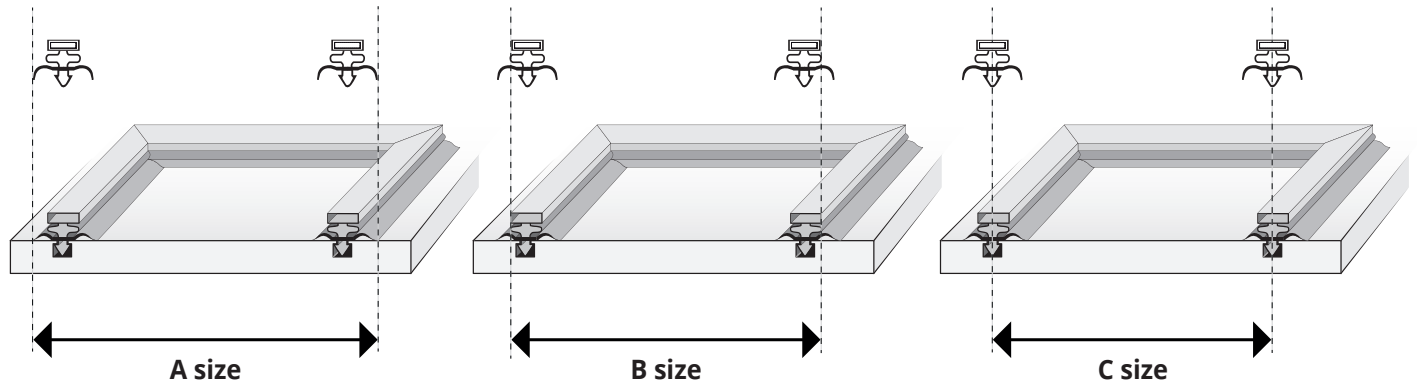
Taking correct measurements is important when ordering made-to-measure door seals. There are three methods to determine the seal measurements.

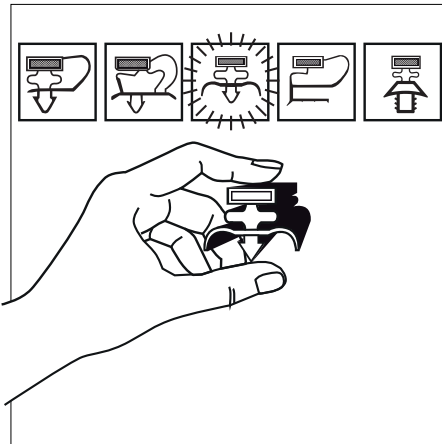
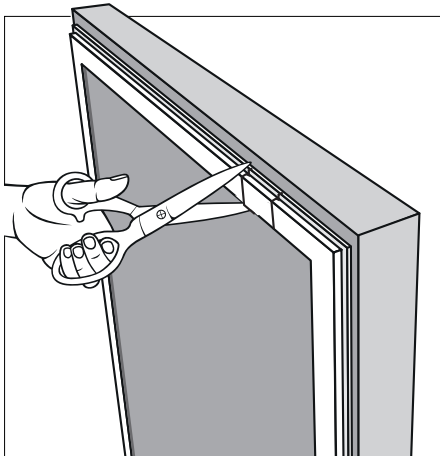
- A size (Outside-to-Outside)
- B size (Magnet-to-Magnet)
- C size (Dart-to-Dart)

Outside-to-outside (A size) measurements can be applied for all door seals. We advise to take outside-to-outside measurements while the seal is still fitted in the door or drawer.

For dart type profiles it is possible to measure Dart-to-Dart (C size). In practice this means you measure the inside edge of the slot on one side to the outside edge of the slot on the other side. This equals the Centre-to-Centre measurement.

Magnet-to-Magnet is measured from the outside of the magnet to the outside of the magnet and is referred to as B size.





**WhatsApp**  
+ 31 6 30 50 3000

## 2 Profile selection

Identify the door seal profile by using the cross section of the seal. A cross section of the seal profile can be cut out from the top side of the door seal using scissors or a craft knife.

Identify the profile by using our door seal sample kit, this catalogue or our website.

If you are unable to find a matching profile, we are there to assist you. Please send us a clear photograph of the cross section via our website, email or WhatsApp. We will answer which profile to use or suggest a suitable alternative.

It is also possible to send a cross section of the old door seal by post along with our order form. The order form can be found on our website. [www.dsu-nl.com/forms](http://www.dsu-nl.com/forms)

### *Door seal sample kit*

We have compiled a professional door seal sample kit for commercial refrigeration engineers. The sample kit contains over 100 of the most commonly used seal / gasket profiles. This sample kit can be ordered via our website article 8.99.99-1.

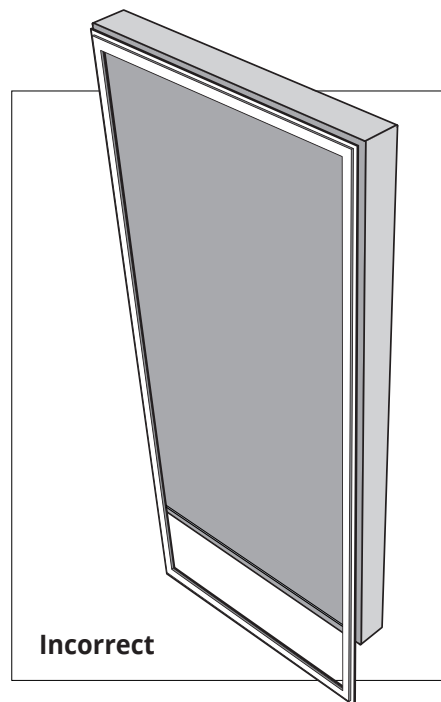
### 3 Order

- Website [www.dsu-nl.com](http://www.dsu-nl.com)
- E-mail [verkoop@dsu-nl.com](mailto:verkoop@dsu-nl.com)
- Fax +31 413 269 068
- Mail Pannebakkerstraat 2, 5405 BP Uden,  
The Netherlands
- Phone +31 413 264 472

### 4 Installation

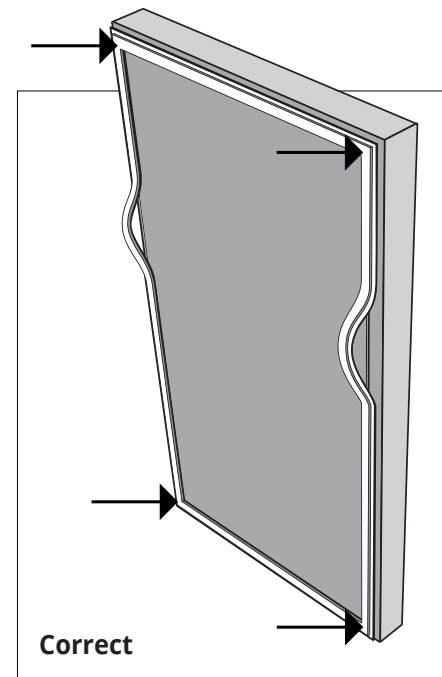
#### *Before installation*

- Take the seal from the box upon receipt.
- Always hold the seal by its corners to keep the magnetic strip from breaking.
- Lay down the seal so it can adapt to its ambient temperature.
- Wrinkles and creases (through transportation) can be removed by gently warming the seal with a hairdryer if necessary.
- Gently remove the old seal from the door or drawer.
- Clean the door/drawer and the cabinet face. Use a clean cloth and Professional fridge seal cleaner (article 8.04.02-0).
- Disinfect the door/drawer and equipment surface with an approved disinfectant (article 8.04.04.0). Let it sit for 30 seconds and wipe dry with a clean cloth before placing the new seal.



#### *Installation*

- Always hold the seal by its corners to keep the corners from tearing and/or the magnetic strip from breaking.
- Right after installation magnetic seals can have less power of attraction. It can take several weeks for the magnet to reach the right power of attraction.
- If a corner breaks during installation this can be repaired by using superglue (art. nr. 8.02.01-0).



#### *Check the following if the seal does not close or seal correctly after installation*

- Check if the correct profile and measurements were ordered.
- Check that the door is not crooked or twisted.
- Does the cabinet face contain a counter magnet?
- Is the seal wrenched on the hinge side? Check if the hinges are properly installed.